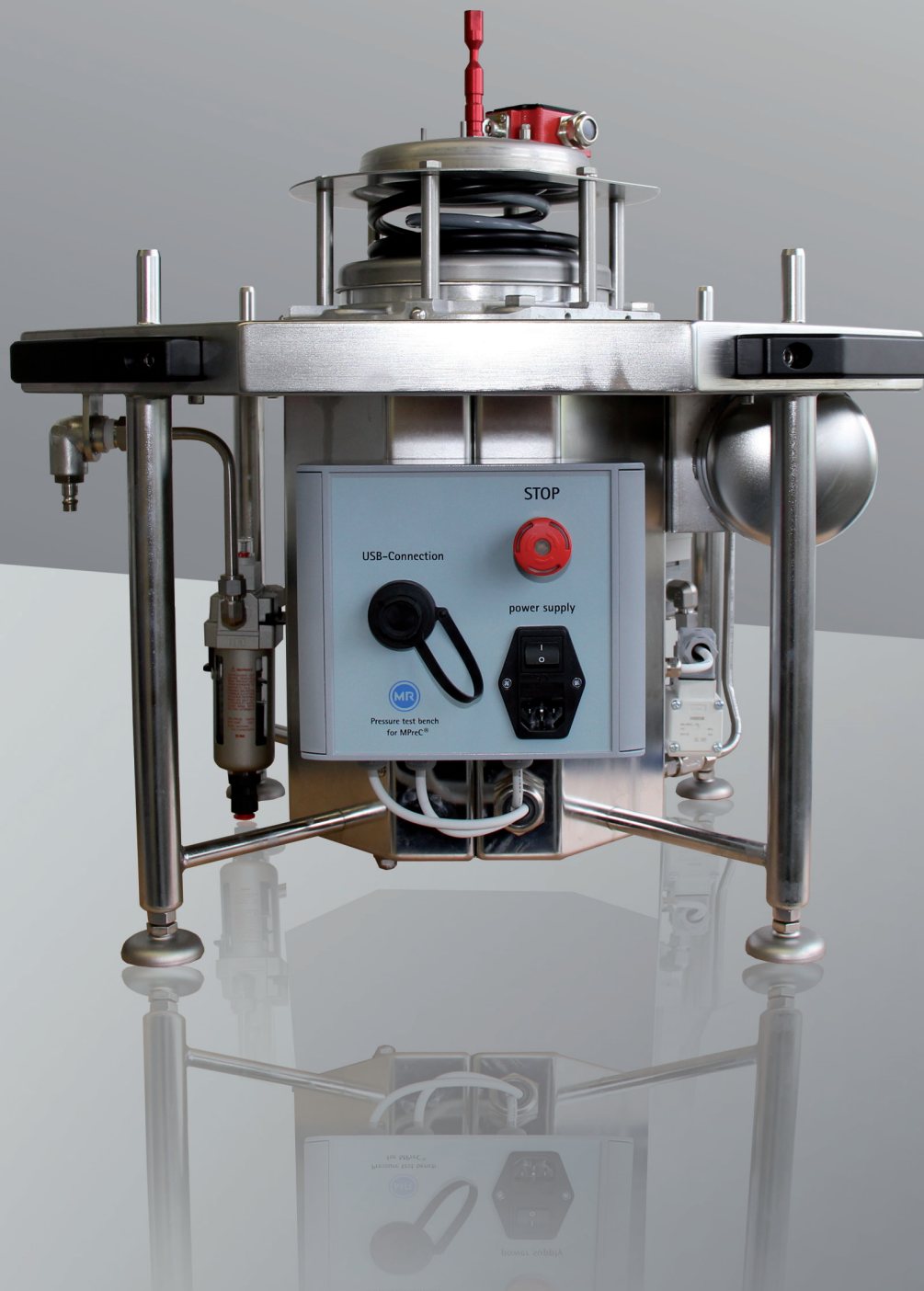


MESSKO[®] MPreC[®] TEST BENCH –



THE MOBILE TEST BENCH FOR PRESSURE RELIEF DEVICES BY MESSKO[®].

WWW.REINHAUSEN.COM



MOBILE TEST BENCH FOR PRESSURE RELIEF DEVICES.

The MESSKO® MPreC® test bench tests and records the accuracy and function of new and used pressure relief devices which are an important part of the transformer protection concept. The mobile test bench offers an additional level of convenience during the commissioning, repair and maintenance of pressure relief devices.

Advantages and features at a glance:

- | Use in the laboratory, the research center, during commissioning or maintenance
- | Operational under the harshest ambient conditions
- | Easy handling and straightforward commissioning
- | Various pressure ranges selectable (4 psi to 30 psi)
- | Supply voltage 110 V to 230 V 50/60 Hz
- | Safe and easy operation
- | Self-explanatory software and evaluation
- | Storage and printout of test results



MESSKO® MPreC® TEST BENCH
with pressure relief valve installed



MESSKO® MPreC® PRÜFSTAND
with hood mounted

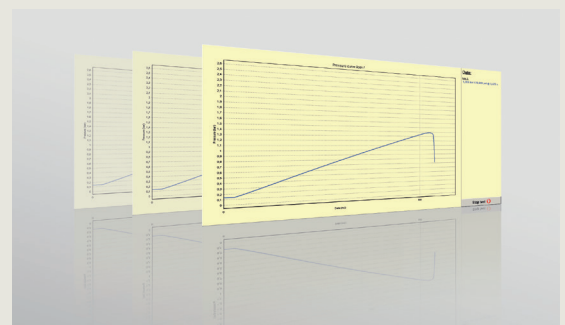
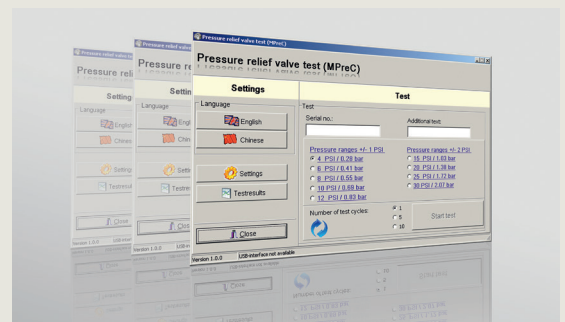
MESSKO® MPreC® TEST BENCH SOFTWARE & TECHNICAL DATA.

Fast and easy evaluation with the MESSKO® MPreC® TEST BENCH software

The data for the pressure relief device can be safely and reliably evaluated, processed and managed with the MESSKO® MPreC® TEST BENCH software. The software makes it possible to choose between different pressure ranges and a number of test cycles on an individual basis and in accordance with customer requirements. The software can be called up in English or Chinese – safe and easy operation is guaranteed.

The test results can be visualized, stored and printed out in a user-friendly manner when the test has been completed.

With the MESSKO® MPreC® TEST BENCH software, MESSKO® offers self-explanatory software including clear representation of the test results.



MESSKO® MPreC® TEST BENCH	Technical Data
Dimensions (HxWxD)	Approx. 800 x 600 x 600 mm
Weight	~ 50 Kg
Protection class	IP55 (control cabinet)
Ambient temperature	-10°C to +50°C
Supply voltage	110/230 V
Line frequency	50/60 Hz
Power consumption	Approx. 25 W
Compressed air supply	Min. 4.0 bar - max. 10 bar
Required compressed air quality	In acc. with ISO 8573-1: 2001 (E) / 2.2.4 (dust, oil and water-free)
Communication with PC software	USB connecting cable
Measuring range	4 psi to 30 psi
Measuring accuracy	±1 psi (in the range 4 psi to 12 psi) ±2 psi (in the range 15 psi to 30 psi)
Number of measuring cycles	1, 5 or 10 (adjustable)
Languages of software interface	English or Chinese

Messko GmbH

Gewerbegebiet An den Drei Hasen
Messko-Platz 1
61440 Oberursel, Germany

Phone: +49 6171 6398 0

Fax: +49 6171 6398 98

Email: messko-info@reinhausen.com

www.reinhausen.com/messko

Please note:

The data in our publications may differ from
the data of the devices delivered. We reserve
the right to make changes without notice.

IN3454054/01 – MESSKO® MPreC® PRÜFSTAND
en – 79006701 – 05/17 – ©Messko GmbH 2017

THE POWER BEHIND POWER.

