



I - 20098 S. GIULIANO MIL. (ITALY) - VIA COLOMBARA, 1 - FRAZ. PEDRIANO
TELEFONO +39 0298.20.44.11 - TELEFAX +39 02 98.20.44.22
E-Mail: cedaspe@cedaspe.com - InterNet Site: <http://www.cedaspe.com>
CAP. SOC. € 500.000 I.V. - TVA-P.I. IT 01065780155 - C.F. 01065780155
R.E.A. MI 729991 - IMPORT - EXPORT MI 142410 - REG. IMPR. 132146/3344/46 TRIB. MI

COMPANY WITH
QUALITY SYSTEM
CERTIFIED BY DNV
= ISO 9001 =

INSTALLATION, OPERATION AND MAINTENANCE GUIDE

GAS SAMPLING DEVICE RG3.2 (FOR RELAYS EB / ET)

STORAGE AND SHELF LIFE

Handle with care. Max storage period before putting the instrument into service is 5 years (temperature -20 +40 °C – air humidity 50-75%) as long as the instrument is kept in its envelope and in a clean place. Before use it is recommended to visual check that no damages happened to any parts.

UNPACKING

Make a correct disposal of packaging according local regulations.

MOUNTING POSITION AND CONNECTIONS

The gas sampling device RG3.2 for gas actuated Buchholz relays shall be fitted on the transformer tank at ground level and within handy height so that sampling, draining and testing operations can be done ensuring workers' safety and without needing to shut down transformer as per EN standard provisions.

A copper tube size OD 8 mm / ID 6 mm (supplied upon request) shall be used to connect the "RG3" device from the cock "12" to the top of the Buchholz relay (cock R).

In case your RG3.2 has been provided of oil draining kit (not included in standard supply and to be ordered as an accessory) use a copper tube, having same dimensions as described earlier on, to connect cock "15" on gas collecting device to the drain cock (pos.T) located at the bottom of relay body. Special ermeto joints "14" are provided with each device (q.ty: 2/EA for RG3.2 model or 4/EA with oil draining kit).

SETTING TO WORK

To fill up the RG3.2 device with oil open first the cocks "R" and "12". Now open cock "2" until oil has entirely filled up the device and then close it when filling up is completed; you can check oil level rising up inside the device through the inspection sight window located on the front side of the same.

After the gas sampling device RG3 has been oil filled the cock "R" top of the relay must be left in open position.

During the normal operation condition the gas sampling device, the Buchholz relay and the tubes which connect the two devices shall be oil filled.

OPERATING THE DEVICE

The RG3.2 device allows to perform three different functions:

- Sampling the gas off Buchholz relay and release the gas off system
- Testing ALARM circuit of Buchholz relay
- Draining oil off Buchholz relay (with draining kit to be ordered separately)

Gas sampling off Buchholz relay

1. Open cock "11" located underneath the RG3 to drain oil and await until gas collected in the relay fills the device (you can observe this through the window).
2. Close the cocks "11" and "12" when the amount of gas needed for sampling is inside the RG3.

Now the gas formerly accumulated in the Buchholz relay, due to some electrical failures inside the transformer, may be drawn off for laboratory analysis or released by opening the cock "2".

Test of ALARM circuit

1. Cock "R" top of relay cover shall be open.
2. Unscrew the protective cap of cock "2"
3. Connect a compressed air bottle, pump for bicycle tyres or our pneumatic test device (supplied upon request) to the cock "2".
4. Open cock "2" and inject air inside RG3 slowly until you get ALARM contact operation.
5. Close cock "2".
6. **RESET TO OPERATION:** the testing medium inflated in the system must be fully released (i.e. until the RG3 is completely filled up again with oil) to reset the Buchholz relay to normal operating conditions: open cock "2" keeping a cloth top of cock until oil leaks out and then close the cock.

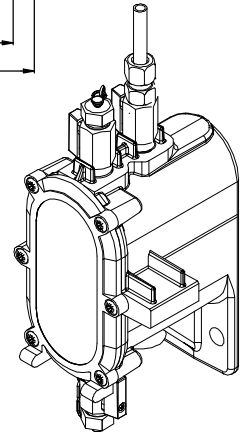
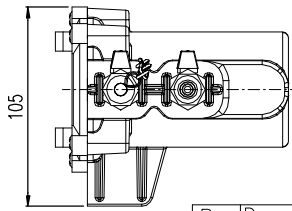
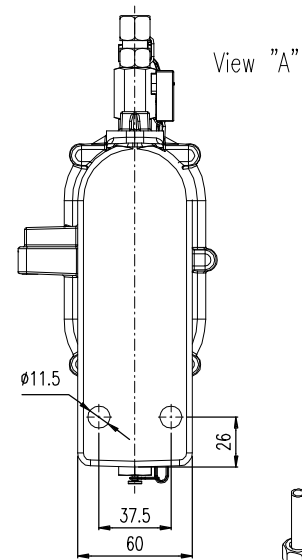
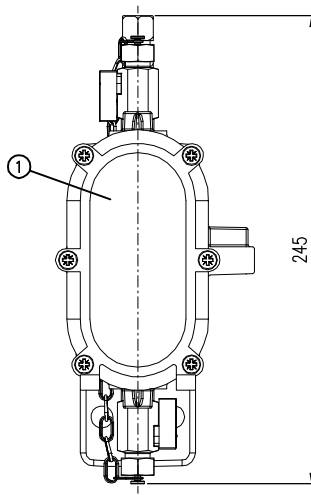
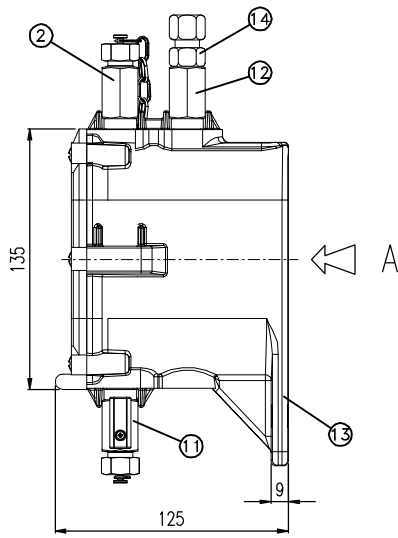
MAINTENANCE

No particular maintenance is required for this RG3. It is suggested only, on a regular basis, to schedule inspections to verify the overall conditions of the device.

DISPOSAL

Disposal of all parts shall be made according to local environmental and waste management regulations.

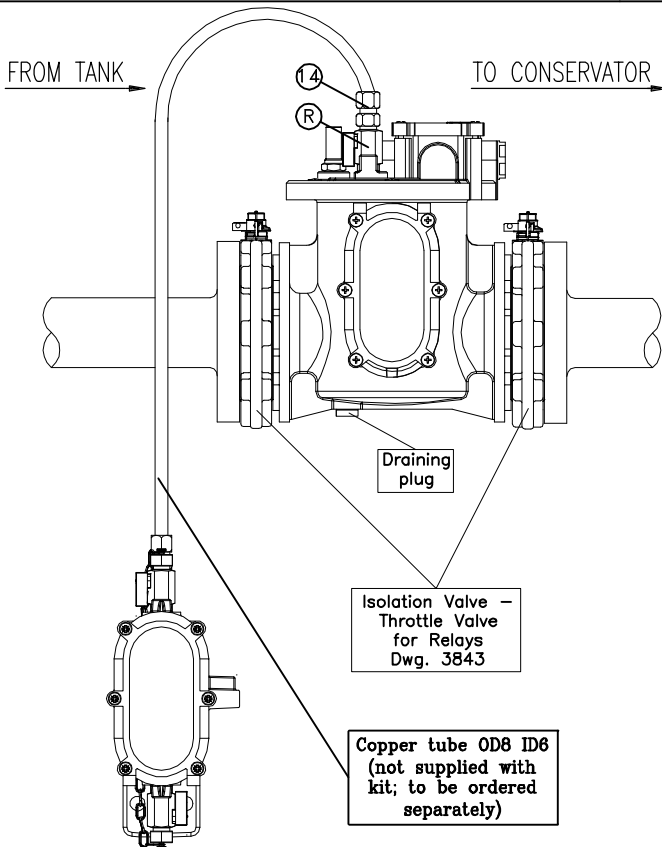
Refer also to the drawings 3680 in the following page.



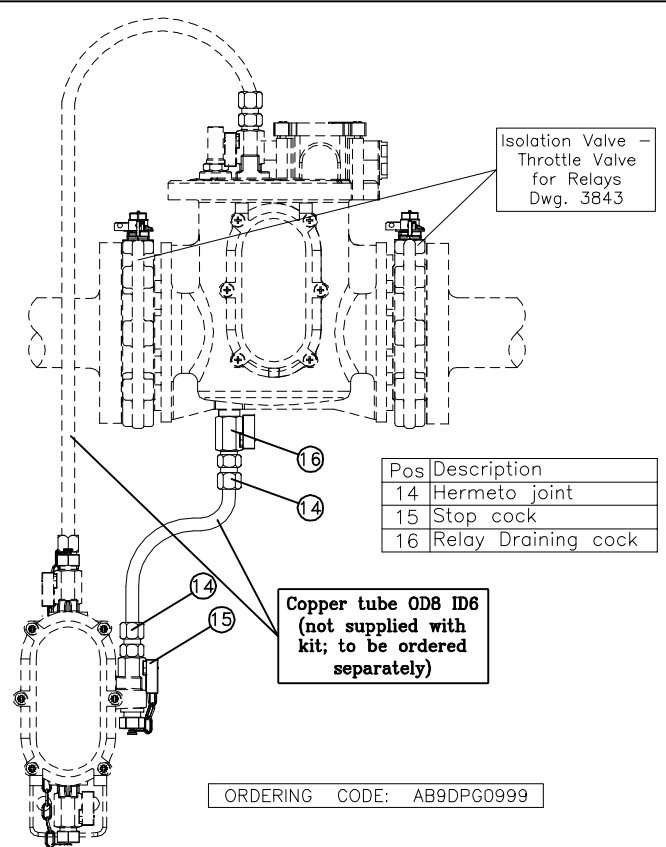
Pos	Description
1	Inspection window
2	Gas release cock
11	Oil drain cock
12	Stop cock
13	Fixing plate
14	Hermeto joint

ORDERING CODES		
MODEL	WINDOW MATERIAL	CODE
RG3.2	TEMPERED GLASS	AB9DPG0172
RG3.2	TROGAMID	AB9DPG0102

RG3 Mounting sketch



OPTIONAL: Relay oil draining Kit



Pos	Description
14	Hermeto joint
15	Stop cock
16	Relay Draining cock

ORDERING CODE: AB9DPG0999



Titolo
New Gas collecting device RG3.2
 Suitable for relays series EB & ET

Data **31/08/12**
 Scala **1:4**
 Dis.
 Visto

Dis. Nr
3680

1	2	3	4	5
---	---	---	---	---

La CEDASPE S.p.A. si riserva a termini di legge la proprietà del presente disegno con divieto di riprodurlo o comunicarlo a terzi senza sua autorizzazione.