



ReCoTec[®] POST INSULATOR HOLLOW CORE PORTFOLIO.

WWW.REINHAUSEN.COM



ReCoTec® POST INSULATOR – FOAM OR GAS FILLED PORTFOLIO.

The Power Composite division is today the No.1 supplier of composite hollow core insulators. All products fulfill the demanding needs for all further innovation and development. Field experience is available of the used materials since the early 90s under harsh conditions.

Application

ReCoTec® Post Insulators consist of a high strength glass fiber tube. Together with the corrosion resistant flanges and the tracking/erosion resistant silicone housing these products fulfill all quality requirements of today's power grids. In order to avoid

any moisture inside the tube the insulators are filled with a reliable foam or eco-friendly gas. This design allows for the combination of extremely light weight and high cantilever strength with best fit also for seismic application. Non-magnetic flanges can be selected for coil applications.

Easy Selection

Each ReCoTec® Post Insulator is designed to meet also the requirements of IEC 60273 or ANSI C29.19 and can be engineered to fulfill specific customer specifications. Contact our Sales Office for your personal request: rpc@reinhausen.com

Examples of available standard foam filled designs

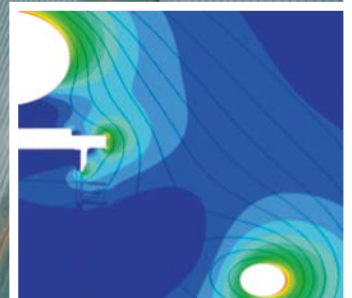
Name Equivalent to (IEC 60273)	Highest Voltage for Equipment (U _m)	Height	Top PDC	Top Holes	Bottom PCD	Holes Bottom	Unified Specific Creepage Distance (USCD)	Min. creepage distance	Max. shed diameter	Arcing distance	dry lightning impuls withstand voltage (LIWV)	wet switching impuls withstand voltage (SIWV)
	kVac	mm	mm		mm		mm/kV	mm	mm	mm	kVp	kVp
C8-1050	245	2300	127 or 225	4x/8x M16	356	8x Ø18	Up to 53,7	7600	322	2100	1050	750
C12,5-1050	245	2300	127 or 225	4x/8x M16	356	8x Ø18	Up to 53,7	7600	322	2100	1050	750
C16-1050	245	2300	127 or 225	4x/8x M16	356	8x Ø18	Up to 53,7	7600	322	2100	1050	750
C20-1050	245	2300	127 or 225	4x/8x M16	356	8x Ø18	Up to 53,7	7600	322	2100	1050	750
C8-1175	300	2650	127 or 225	4x/8x M16	356	8x Ø18	Up to 53,7	9300	336	2500	1175	850
C12,5-1175	300	2650	127 or 225	4x/8x M16	356	8x Ø18	Up to 53,7	9300	336	2500	1175	850
C16-1175	300	2650	127 or 225	4x/8x M16	356	8x Ø18	Up to 53,7	9300	336	2500	1175	850
C20-1175	300	2650	127 or 225	4x/8x M16	356	8x Ø18	Up to 53,7	9300	336	2500	1175	850
C8-1300	362	2900	127 or 225	4x/8x M16	356	8x Ø18	Up to 53,7	11300	338	2700	1300	950
C12,5-1300	362	2900	127 or 225	4x/8x M16	356	8x Ø18	Up to 53,7	11300	338	2700	1300	950
C16-1300	362	2900	127 or 225	4x/8x M16	356	8x Ø18	Up to 53,7	11300	338	2700	1300	950
C20-1300	362	2900	127 or 225	4x/8x M16	356	8x Ø18	Up to 53,7	11300	338	2700	1300	950
C8-1550	420	3350	127 or 225	4x/8x M16	356	8x Ø18	Up to 53,7	13020	338	3200	1550	1050
C12,5-1550	420	3350	127 or 225	4x/8x M16	356	8x Ø18	Up to 53,7	13020	338	3200	1550	1050
C16-1550	420	3350	127 or 225	4x/8x M16	356	8x Ø18	Up to 53,7	13020	338	3200	1550	1050
C20-1550	420	3350	127 or 225	4x/8x M16	356	8x Ø18	Up to 53,7	13020	418	3200	1550	1050
C8-1800	550	4200	127 or 225	4x/8x M16	356	8x Ø18	Up to 53,7	17050	338	4000	1800	1175
C12,5-1800	550	4200	127 or 225	4x/8x M16	356	8x Ø18	Up to 53,7	17050	338	4000	1800	1175
C16-1800	550	4200	127 or 225	4x/8x M16	356	8x Ø18	Up to 53,7	17050	426	4000	1800	1175
C20-1800	550	4200	127 or 225	4x/8x M16	415	8x Ø18	Up to 53,7	17050	426	4000	1800	1175
C8-2100	800	4600	127 or 225	4x/8x M16	356	8x Ø18	Up to 53,7	24800	346	4500	2100	1550
C12,5-2100	800	4600	127 or 225	4x/8x M16	356	8x Ø18	Up to 53,7	24800	426	4500	2100	1550
C16-2100	800	4600	127 or 225	4x/8x M16	356	8x Ø18	Up to 53,7	24800	426	4500	2100	1550
C20-2100	800	4600	127 or 225	4x/8x M16	415	8x Ø18	Up to 53,7	24800	426	4500	2100	1550

Advantages

- All voltages up to 1.100kV in single unit design available
- Gas- or foam-filled solutions
- Optional real-time gas monitoring equipment
- Lightweight high strength design
- Wide variety of shed profiles for all voltage levels and conditions
- In house engineering and simulation
- Eco friendly (SF6 free)
- Vandalism and seismic resistance
- Superior pollution performance

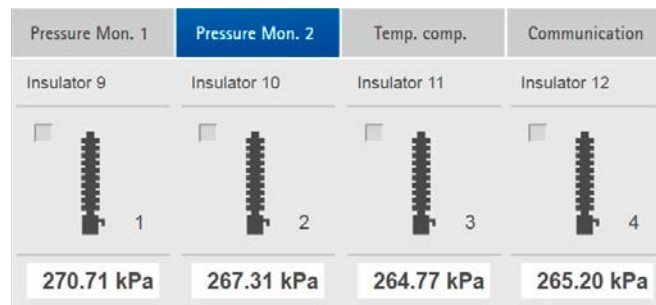


DC-field calculation

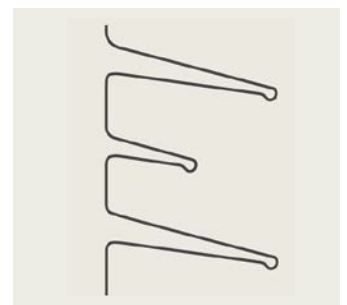


Bending strength (Elast. limit)	Deflection @MDCL	Weight
kN	mm	Kg
8	< 5%	130
12,5	< 5%	110
16	< 5%	120
20	< 5%	110
8	< 5%	130
12,5	< 5%	130
16	< 5%	130
20	< 5%	160
8	< 5%	150
12,5	< 5%	150
16	< 5%	180
20	< 5%	180
8	< 5%	170
12,5	< 5%	170
16	< 5%	200
20	< 5%	210
8	< 5%	200
12,5	< 5%	250
16	< 5%	260
20	< 5%	330
8	< 5%	260
12,5	< 5%	310
16	< 5%	310
20	< 5%	410

Monitoring solutions



Monitoring solutions e.g. pressure control can be integrated



Example of standard shed profile

Examples of available standard gas filled designs

Mechanical category	Extra High	High	Standard
Max. length	12500 mm	12500 mm	12500 mm
Max. bending moment @ SCL	600 kNm	400 kNm	300 kNm
Torsional performance	20 kNm	15 kNm	10 kNm
Compression performance up to	500 kN	400 kN	200 kN

Reinhausen Power Composites GmbH

Weidener Strasse 20
93057 Regensburg, Germany

Reinhausen France SAS

12 Boulevard d'Alsace Lorraine
03300 Cusset, France

Phone: +49 941 4090-0

E-mail: rpc@reinhausen.com

www.reinhausen.com

Please note:

The data in our publications may differ from
the data of the devices delivered. We reserve
the right to make changes without notice.

IN6976042/00 EN – ReCoTec® POST INSULATOR

F0382200 – 03/21 – uw –

©Maschinenfabrik Reinhausen GmbH 2021

THE POWER BEHIND POWER.

