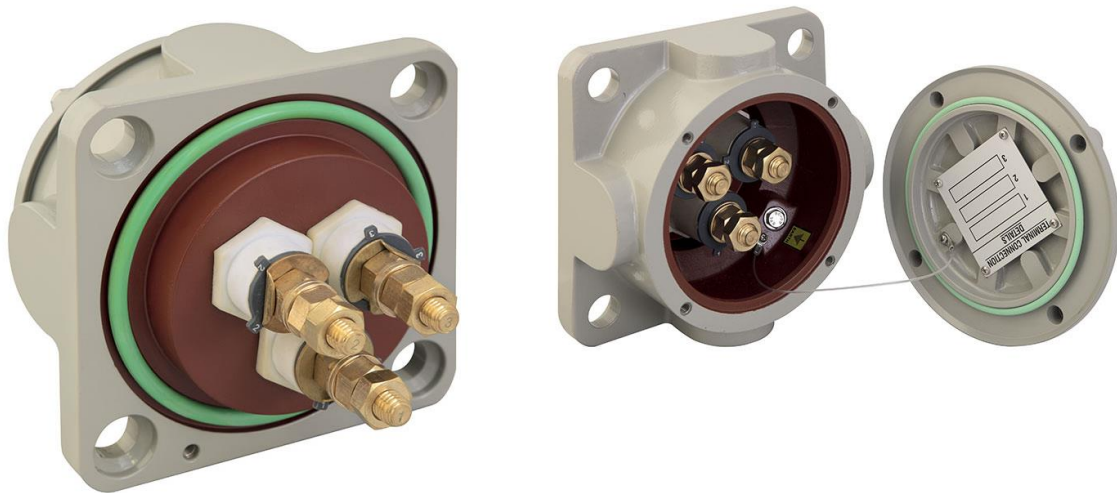


## INSTALLATION, OPERATION AND MAINTENANCE GUIDE

### CORE GROUNDING CGT / CFT SM2-S SERIES



### GENERAL OVERVIEW

The CEDASPE CGT/CFT SM2-S series has been designed to offer an easy, fast and reliable solution for core and frame grounding.

This core grounding terminal box has a compact, flanged body made of aluminum alloy, which allows for easy attachment to the transformer walls (plug-in solution) by means of welded studs or screws.

### STORAGE AND SHELF LIFE

Max storage period before putting the instrument into service is 3 years (temperature -20 +40 °C – air humidity 50-75%) as long as the instrument is kept in its envelope and in a clean place.

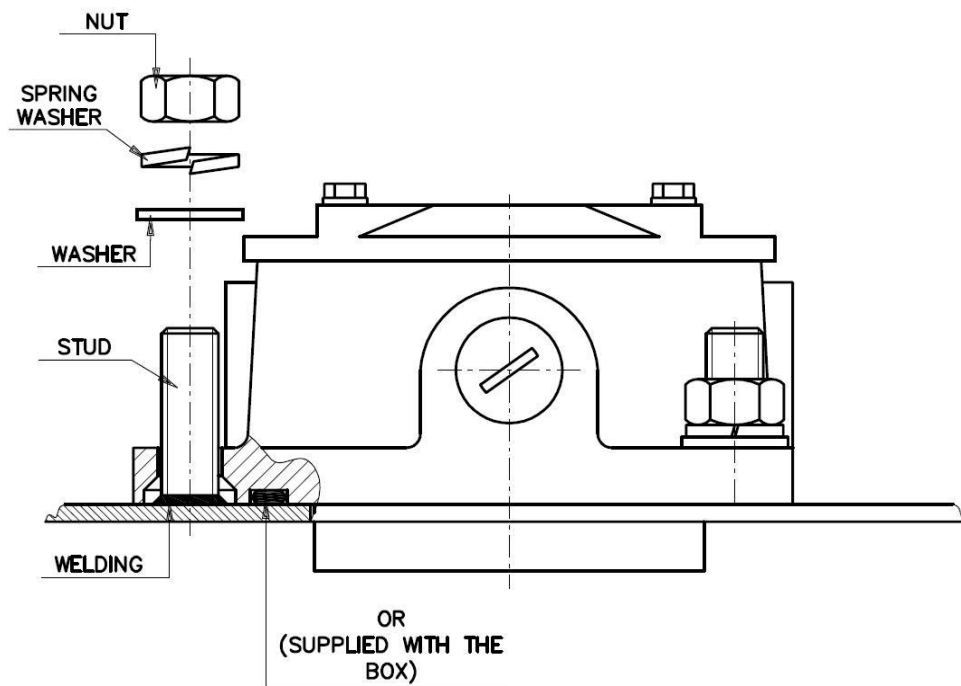
Before use check visually that no damages happened to any parts. Boxes that have been stored long term should have the gaskets inspected; this can be a visual inspection on the edge of the gasket for cracking. No special long term storage packaging is required.

### UNPACKING

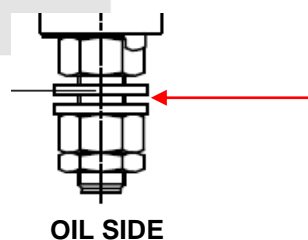
Make a correct disposal of packaging according local regulations.

## INSTALLATION

- 1) Cut a bore on tank  $\varnothing 112$  mm.
- 2) Weld on tank cover 4 fixing studs M16 h=40 on a PDC 180 mm.
- 3) Fit o-ring gasket in its seat.
- 4) Fit box inside tank cover bore making sure that o-ring gasket has been previously assembled.
- 5) Fasten terminal box with hexagonal nuts M16 and washers by means of a common spanner (see figure below).



- 6) Make the connection inside transformer tank referring to the plate inside the box; wires lug have to be fitted in between the two washers and locked by two off locking nut –see figure below.



- 7) For models CGT equipped with 1 or 2 terminals: open box's cover by means of a spanner no.10 (4 bolts) and connect the terminals to the ground screw M12 (using our copper flexible connection kit, if supplied), and ground the box.
- 7.1) For model CFT open box's cover and connect the terminals (using our connection plate, if supplied), and ground the box.

### NOTE:

If required (i.e.: when terminal boxes are 2 or more on the same tank) mark the number of box on the external label; if the numbering of wiring is different from the numbering of terminals it is possible to write conversion numbers on the plate inside the box.

## MAINTENANCE

If utilized appropriately no maintenance is required for these products. It is suggested only, on a regular basis, to schedule inspections to verify the overall conditions of assembly.

## DISPOSAL

Disposal of all parts shall be made according to local environmental and waste management rules.



-Drawings in the following pages-